



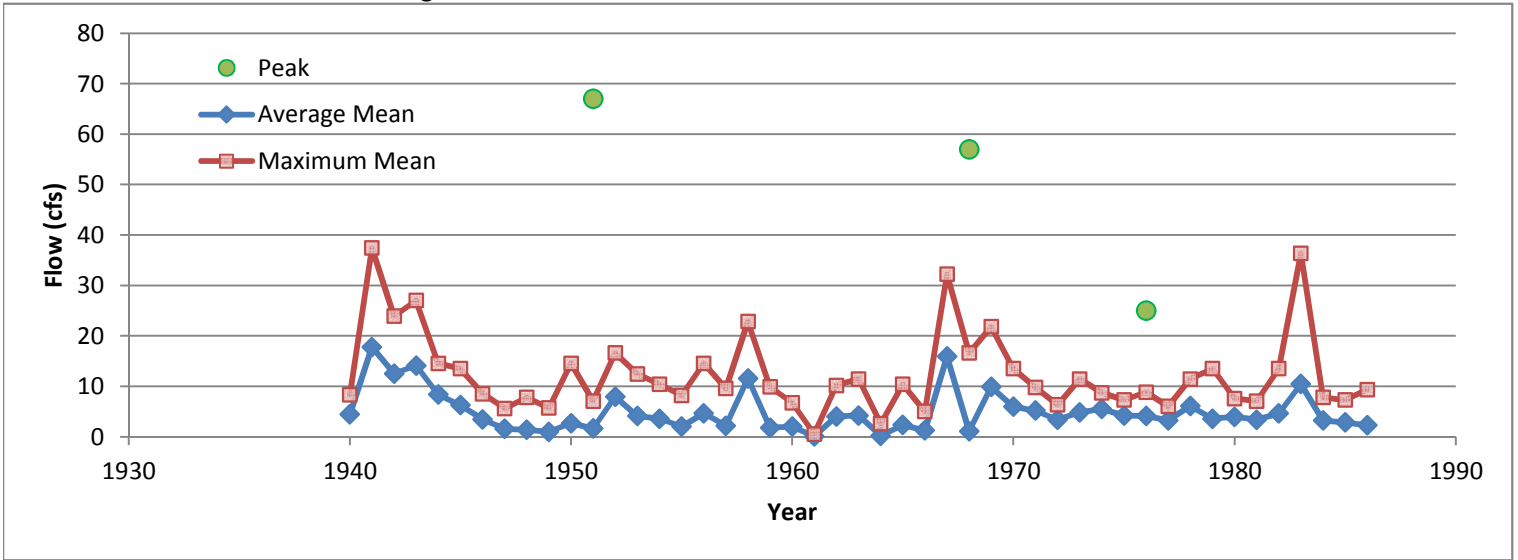
Bridge Street Bridge over Arroyo Grande Creek Project

Maximum Mean, Average Mean, and Peak Annual Flows

Based on Gaging Station USGS 11141500 (ARROYO GRANDE AT ARROYO GRANDE CA)

Data displayed is for a construction period between June 1 and October 31

Years of Data are from 1940 through 1986



Statistical Analysis of Flow For Data Between June 1 and October 31

Mean Flow (50% Probability of Occurrence) = 12 cfs

Ratio of Peak to Mean Flows at Gaging Station

(Based on peak flows that occur during the construction period)

Date	Peak	Mean	Ratio of Peak to Mean Flow
6/8/1951	67	3.9	17.2
9/3/1968	57	2.7	21.1
9/28/1976	25	7.2	3.5

Peak to Mean Ratio (Average) = 4

(Based on all available data, including peaks that occur during other months)

Approximate Peak Flow (50% Probability of Occurrence)

(With Peak to Mean Ratio Adjustments)

Mean Flow (cfs)	Ratio	Peak Flow (cfs)
12	17.2	206
	21.1	253
	3.5	42
	4	50



Bridge Street Bridge over Arroyo Grande Creek Project

Maximum Mean Daily Flows

Based on Gaging Station USGS 11141500 (ARROYO GRANDE AT ARROYO GRANDE CA)

Average taken for a construction period between June 1 and October 31

00060, Discharge, cubic feet per second,												
Day of month	Maximum of daily mean values for each day for 46 - 47 years of record in, ft ³ /s (Calculation Period 1939-10-01 -> 1986-09-30)											
	Jan	Feb	Mar	Apr	May	Jun	Jul	Aug	Sep	Oct	Nov	Dec
1	122	254	2,619	2,214	166	37	23	21	16	22	14	34
2	85	520	1,975	984	153	36	23	20	16	18	14	32
3	70	300	1,600	2,182	138	35	23	20	15	15	14	37
4	58	234	1,943	1,122	127	33	22	20	16	15	14	30
5	53	204	1,278	817	122	33	22	19	15	16	12	31
6	82	330	771	1,424	115	32	22	19	16	15	14	3,159
7	328	711	665	1,143	112	31	22	16	17	12	11	479
8	277	1,154	565	648	108	33	21	14	17	14	12	167
9	125	775	2,172	488	101	31	21	18	15	12	12	77
10	97	1,060	1,787	367	86	29	21	17	16	12	14	65
11	154	736	977	719	79	29	22	16	14	14	15	58
12	201	659	634	474	76	29	21	15	15	15	14	70
13	352	1,102	457	337	77	29	21	14	17	14	14	54
14	216	621	410	276	75	26	21	12	20	14	36	45
15	2,899	625	1,019	249	73	26	21	14	19	15	23	41
16	1,033	441	669	230	72	26	21	15	18	15	17	32
17	528	532	404	214	69	25	21	16	17	14	14	30
18	414	532	491	207	64	24	27	15	16	12	14	28
19	493	769	444	265	62	24	22	14	15	14	14	27
20	239	800	408	217	59	24	21	15	15	14	19	26
21	335	833	474	273	59	24	21	15	15	15	17	64
22	1,008	613	591	296	59	24	21	17	12	15	16	61
23	1,216	405	587	299	58	24	21	18	14	14	25	60
24	795	890	804	368	53	24	21	18	12	14	28	339
25	1,205	683	619	296	50	23	22	14	14	14	26	438
26	957	366	526	255	49	23	21	14	15	14	23	430
27	1,486	648	462	224	46	23	21	15	14	16	23	258
28	911	565	428	189	45	23	20	15	16	15	23	504
29	688	272	368	164	43	24	21	17	15	15	22	319
30	433		327	141	42	24	23	16	16	15	33	291
31	322		518		38		20	16		14		163

Average of the Maximum Mean Daily Flow =

18 cfs

With Peak to Mean Ratio Adjustments

Mean Flow (cfs)	Ratio	Peak Flow (cfs)
18	17.2	309
	21.1	380
	3.5	63
	4.2	76