

Did you know:

Storm water pollution is controlled by the Clean Water Act amendments of 1987. The amendments authorized the U.S. Environmental Protection Agency (EPA) to expand the National Pollutant Discharge Elimination System (NPDES) Program to cover storm water discharges. The NPDES Program is a permitting mechanism that requires the implementation of controls designed to prevent harmful pollutants from being washed by storm water runoff into local water bodies. NPDES includes Industrial, Construction, Municipal, and Waste Discharge Storm Water Programs. The City of Arroyo Grande is regulated by the NPDES Municipal Separate Storm Sewer Systems (MS4) Phase II General Permit.



IMPORTANT

In addition to the stormwater requirements that Phase II MS4s place on construction sites, construction operators may also need to apply for NPDES Construction General permit coverage.

FOR MORE INFORMATION:

www.casqa.org

www.waterboards.ca.gov/water_issues/programs/stormwater/construction.shtml

YOU COULD BE
LIABLE FOR **FINES**
IF YOU ARE OUT OF
COMPLIANCE!



City of Arroyo Grande

City Hall
300 East Branch St
Arroyo Grande, CA 93420

Engineering Phone: 805-473-5440
www.arroyogrande.org

CONSTRUCTION STORM WATER BMPs

BEST MANAGEMENT PRACTICES



A CONSTRUCTION SITE
OPERATOR'S GUIDE
TO THE CITY OF
ARROYO GRANDE'S
EROSION & SEDIMENT
CONTROL PROGRAM



City of Arroyo Grande Engineering
300 East Branch Street
Arroyo Grande, CA 93420

(805) 473-5440
www.arroyogrande.org

CONSTRUCTION

BEST MANAGEMENT PRACTICES
for erosion & sediment control

Best management practices (BMPs) are practices, means, methods, measures, devices, structures, vegetative plantings and/or a combination thereof designed to safely control erosion and sediment so that construction wastes or contaminants from construction materials, tools and equipment are prevented from entering the storm drain system.

The City requires that BMPs be in compliance with the California Stormwater Quality Association (CASQA) handbook or equivalent.

Erosion Control BMP Examples:

- Scheduling
- Preservation of Existing Vegetation
- Hydraulic Mulch
- Hydroseeding
- Soil Binders
- Straw Mulch
- Geotextiles & Mats
- Wood Mulching
- Earth Dikes and Drainage Swales

Sediment Control BMP Examples:

- Silt Fence
- Sediment Basins
- Sediment Traps
- Check Dam
- Fiber Rolls
- Gravel Bag Berm
- Street Sweeping/Vacuuming
- Sandbag Barrier
- Storm Drain Inlet Protection

Only **Rain**
Down the
Drain!



Good Housekeeping

- Use a broom rather than a hose to cleanup landscape debris, dirt, and construction debris and keep them out of the street and gutter.
- Contain trash & landscape debris. Do not blow them into the street or offsite.
- Fix and clean up any equipment leaks and spills.
- Use designated concrete washouts.
- Cover stockpiles and protect prior to onset of rain.
- Store materials preferably indoors; but if outside, cover and store them on pallets with secondary containment.
- Have a spill cleanup plan and clean up spills immediately. For hazardous materials, follow cleanup instructions on package. Use absorbent material such as kitty litter to contain spills.
- Do not clean paint brushes and construction tools in the storm drain, gutter or street. Make certain to properly dispose of excess paints as well as other hazardous wastes.

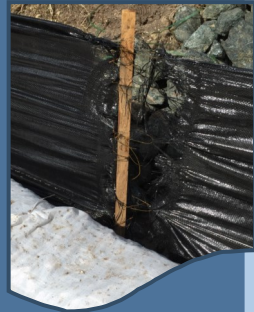
Protect Nearby Inlets

Protect all storm drain inlets (upstream and downstream) near the area that will be disturbed. Monitor and clean all inlet protection as necessary, before, during and after all rain events. Remove and replace any broken sand bags, and sweep or vacuum up any loose sand.

BMP Do's & Don'ts

DON'T leave damaged BMPs in place.

DO repair them as soon as possible if they become damaged.



DON'T let sediment get into the gutter or inlets.

DO sweep/vacuum up spills or residual sediments as soon as possible.



DON'T track sediment from an active construction site into the street.

DO install a rocked construction entrance or equivalent and regularly sweep the road.



scheduling

Phasing your project to minimize the amount of exposed soil at any given time is a highly effective way to prevent erosion. Plan grading activity to align with currently active construction, rather than grading the entire site at once.

learn more

For additional information on the City's stormwater management program, visit:

www.arroyogrande.org/145/Stormwater-Management